

This Is Who We Are

2020 ANNUAL REPORT





This Is Who We Are

Who we are is never more apparent than during times of crisis.

In New Hampshire in 2020, we saw people run toward the public health emergency, putting themselves at risk to care for their neighbors. And we saw people angrily protest the public health measures proven to slow the spread of disease.

We saw a new mobilization against and growing awareness of the systemic racism

that has thrown up barriers in front of Black and brown people since before this republic was one. And we saw an ugly backlash — including threats of violence and a move to censor teaching about our shared history.

Despite a global pandemic, we saw more people vote in a presidential election than had since 1964 — and we have become less likely to trust our neighbors.

We saw promising new models of nonprofit news spring up to keep our communities informed — and we saw online echo chambers mutate with dangerous conspiracy fantasies.

We saw people in the nonprofit sector roll up their sleeves and keep delivering on their missions during a time of sweeping illness and fear and uncertainty. We saw generous people come forward

with resources when they were most desperately needed. We saw innovation, ingenuity and breathtaking courage and compassion. We saw heartbreak. And perseverance. And grace.

Our communities face significant challenges ahead.

Here are 10 stories from a time of shared crisis that give us enduring hope.

We are critical infrastructure

Devon and Morgan Phillips ran toward the emergency.

At the height of the pandemic, Devon, a school nurse, reenlisted to work 12-hour shifts in the emergency department at the hospital in Colebrook. Morgan, a paramedic, was working 24-hour ambulance shifts in Berlin.

Devon and Morgan were able to care for their community when they were needed most because the child care center that their kids attend stayed open to care for their children.

The nonprofit Country Day School in Colebrook was part of an emergency child care collaborative created by the state Department of Health and Human Services in partnership with the Charitable Foundation and child care professionals. Thousands of children were cared for in more than 200 centers statewide. The Foundation provided grants and staff time to the effort, plus grants to individual nonprofits.

Devon would drop the kids at the center at 6:30 a.m. "There is no way we could have continued to do our

jobs without child care," she said.

The centers provided families of essential workers with more than just physical care: People who worked in health care and other frontline jobs were under enormous stress and subject to significant trauma. Stable child care provided children and families with constancy, comfort and familiarity amid a frightening storm.

"My children love their day care providers like they love their aunts and uncles and grandparents," Devon said. "That was also really important during that period of time."

Quality child care is part of the critical infrastructure that makes our communities run. Just ask Devon and Morgan Phillips — and every sick person they cared for.

Pictured: Three-year-old Rawson Phillips at the Country Day School in Colebrook with (clockwise from left) teacher Katelyn Ryder, and parents Morgan and Devon Phillips.





We are advocating for justice

Showing up on the side of justice has always been the mission.

In an era of new complexities, tensions and awareness, the New Hampshire program of the American Friends Service Committee has been unwavering and expansive in its dedication to that mission, working on a towering array of issues — from racial equity to immigrants' rights to economic justice.

In addition to Director Maggie Fogarty, the New Hampshire team now includes Program Coordinator Grace Kindeke, Grassroots Organizer Intern Lidia Yen and Decarceration Organizer Intern Anthony Harris. Recent Foundation grants have helped support operations and expand capacity.

On a given day, you might find members of this team outside ICE headquarters in Manchester, standing up for the dignity and humanity of undocumented immigrants, working with formerly incarcerated people who are advocating for an end to discrimination and greater accountability in our criminal justice systems, unveiling a public art project documenting the lives

of families separated by deportation and detention, testifying against the move to censor the teaching of systemic racism, and organizing young people working to improve their communities. And the focus, always, is on finding ways for people most affected by injustice to use their own voices and power to create a society that is more just for all.

Justice is the thread that binds the work and the goal that keeps the weary from faltering.

“Every human being deserves to have what they need to thrive: access to education, health care, an environment that does not discriminate against them, that sees and cares for their physical and spiritual humanity,” Grace said. “You can’t have racial justice without economic justice. You can’t have economic justice without immigrant justice. It’s about uplifting and protecting the humanity of all.”

Pictured (left to right): Lidia Yen, Maggie Fogarty, Anthony Harris and Grace Kindeke of the American Friends Service Committee.



We are everyday superheroes

It was April of 2020. Everyone who could was working from home, going to school from home, grocery shopping curbside and staying away from crowds.

Annie Day decided to take a new job: She would manage the Families In Transition Adult Emergency Shelter. More than 100 people come here for safe shelter and warm meals in a congregate space — and for services that help them overcome barriers to employment, housing and more.

This U.S. Coast Guard veteran, who was born and raised in Manchester, gloved up, strapped on an N-95 mask, pulled down a face shield and went to work.

She was just one of the hundreds of “everyday superheroes” who work with people without homes and whose dedication, ingenuity and love for their communities kept shelters around the state open for people who needed them.

A grant from the Foundation’s Community Crisis Action Fund very early on — before public funding became available — helped shelters around New Hampshire adapt during the crisis. (Additional funding

from the Foundation would also support coordinated COVID testing across the state’s network of shelters.)

The early funding helped shelters with things like handwashing stations and thermometers, PPE, decompression and quarantine sites to prevent spread among residents, outreach to people who needed help and hazard pay for staff — whose jobs had become exponentially more hazardous. When Annie’s mom got laid off during the pandemic, hazard pay meant Annie was able to do things like cover her mom’s cell phone bill so they could stay in touch.

The building where Annie comes to work is one whose corridors are etched in her muscle memory. It was the Girls’ Club she attended as a child.

“This is kind of where I started and got supported in the community,” Annie said. “I believe in serving community. I am proud of the work we do here.”

Pictured: Annie Day, manager of Families In Transition Adult Emergency Shelter in Manchester.



We are keeping open space open

It was the year we fell in love with the fields and streams and forests closest to home.

During a global pandemic, being outdoors was a safe way to have fun. The natural world became a source of constancy and solace for many in desperately troubled times.

New Hampshire people took to their local trails in record numbers.

When they did, many discovered trails on land protected by small land trusts — like Bear-Paw Regional Greenways in Northwood, which has two staffers and has conserved 9,500 acres across 11 towns in the heart of the state.

“All land trusts really did a great job at pivoting,” said Katrina Amaral, executive director of Bear-Paw. “The work that we have been doing really paid off for our communities this past year.”

Bear-Paw developed an outdoor curriculum for parents, students and educators to use, bringing

science lessons outside when schools went remote.

Increased use brought with it some increased misuse: ATVs and dirt bikes where they did not belong, rogue trails cut by ardent neophytes. But in a COVID silver lining, local, non-motorized outdoor exploration also lessened the environmental impact of people traveling long distances to enjoy the outdoors.

And local trails, once discovered, are likely to be long treasured.

“My appreciation for what is right outside my door has never been greater,” wrote Grace Mattern of Northwood, who chairs Bear-Paw’s board. “How lucky to have discovered so much because I thought I was limited to so little.”

Pictured: Bear-Paw Stewardship Coordinator Rue Teel (left) and Executive Director Katrina Amaral explore the Dearborn Forest in Raymond with Teel’s dog, Tilda.

We are why art matters

In June of 2020, 16 Black theatre artists from all over the country gathered on a New England farm to focus on Black joy.

It was an inspired act of resistance.

JAG Productions, a tiny theatre company based in White River Junction, Vt., had been mounting its first off-Broadway play in addition to its regular programming when COVID hit and then George Floyd was murdered.

“We were in desperate need of an opportunity to focus on storytelling that was healing and not centered on our pain and struggle, but our joy,” said Jarvis Green, JAG Productions founder and artistic director.

For a month, the group explored the question, “Can we make theatre that isn’t in response to racism or white supremacy or whiteness?” The resulting film, “Homecoming, a Return to Black Joy,” is in production. As the world roiled, this organization adapted — and gave. A Foundation grant helped JAG continue its work.

Jarvis hosted “Come as You Are,” a weekly virtual gathering for Black, indigenous and other people of color — particularly those in rural areas. As a wave

of violence against transgender people continued to rise, JAG co-hosted “Out Here,” a virtual open mic to benefit a nonprofit supporting trans people.

And Jarvis decided the fifth JAG-fest, an annual festival of dozens of new plays by Black artists, would be staged as radio plays — with love as the central theme.

Anyone who has ever struggled to explain the importance of the arts might try this, from JAG’s mission:

“...to catalyze compassion, empathy, love, and community through shared understandings of humankind through the lens of the African-American experience...”

“For me, theatre is the only art form where humanity confronts itself,” Jarvis said, “and that is where that empathy, that shared humankind, happens.”

Pictured: Jarvis Green at JAG Productions in White River Junction, Vt.





We are making sure people can vote

In November of 2020, amid very dark days of the pandemic, all New Hampshire voters were allowed to vote by absentee in a general election — for the first time ever.

But not everyone knew how. For some, that lack of knowledge presented a barrier to voting.

A coalition of New Hampshire nonprofits worked to break down those barriers and help ensure that everyone understood how to vote safely and securely.

“We didn’t want anyone to have to choose between their right to vote and their health,” said Sarah Chaisson-Warner, director of the New Hampshire Democracy Fund, which was part of the coalition that advocated for the law change to expand absentee voting. “The more that we could do together to ensure a safe, secure and accessible election, the better it would be for everyone.”

With support from a Foundation grant, the nonprofit and nonpartisan Open Democracy embarked on an extensive, statewide voter-outreach campaign, without regard for political affiliation, to help make sure

people understood their eligibility and how to vote absentee. Open Democracy focused on four groups with identified barriers to understanding voting rights and options: young adults and students, people of color, women from low-income households and people in very rural communities.

The coalition developed the website Votenh2020.org, where the process for voting absentee was outlined in detail in English and Spanish.

Causation is impossible to measure. But 73 percent of New Hampshire’s voting-age population turned out to vote in the 2020 presidential election — the highest turnout since 1964. Absentee ballots were credited with boosting that turnout: Nearly a third of all votes came in by absentee. The coalition’s work to preserve voting rights continues at the legislative and grassroots levels.

Pictured: Town of Grafton Police Chief Russell Poitras getting ready to open up the polls at Town Hall on Tuesday, November 2, 2020.

HELP KEEP OUR POLLING PLACE SAFE WITH THESE STEPS

- 1 Maintain at least 6 feet of social distancing.
- 2 Avoid touching and shaking hands.
- 3 Wear a mask or face covering.
- 4 Avoid touching your eyes, nose, and mouth.
- 5 Use the provided writing surface mat.

To protect yourself against potential contamination, place the provided mat on the writing surface in your voting booth or screen before marking your ballot.

Sanitize your hands after voting. After you have cast your ballot, use an alcohol-based hand sanitizer or hand-washing facility to thoroughly sanitize your hands.

SECRETARY OF STATE'S TOLL-FREE HOTLINE FOR VOTING DURING COVID-19: 726-0034



We are building healthy communities

Bishnu Khadka has delivered food to quarantined people, teamed up with firefighters to deliver COVID vaccines at a homeless encampment, helped uncertain English speakers understand public health guidance and coronavirus testing.

She is part of a team of four community health workers in Manchester — who speak ten languages among them — working to improve health outcomes for people in the Queen City.

Early on, it became clear that Latinx, Black and other people of color were being disproportionately affected by COVID. Nationwide, people from communities of color are three times more likely to be infected with the virus than whites, and twice as likely to die.

New Hampshire's COVID-19 Equity Response Team recommended to Gov. Chris Sununu in May of 2020 that an army of COVID-19 response community health workers be deployed to help people of color access

care, testing and other services and resources to improve health outcomes.

Grants from the Foundation's Community Crisis Action Fund, combined with federal CARES Act funding, made it possible for the cities of Manchester and Nashua to each hire four community health workers to do just that.

Long term, community health workers are connecting people with health care and other needs, helping them navigate systems and address chronic conditions and other barriers to wellness.

Ultimately, Bishnu said, building better health in a community starts with building trust. "If we can have that trusting relationship, I can help people with their health."

Pictured: Bishnu Khadka (second from right) with (left to right) Community Liaison Victoria Adewumi and fellow Community Health Workers Biram Saidybah, Rosine Uwineza, and Bertha Meija.



We are feeding New Hampshire

Some quick math:

The average price of a gallon of milk is \$3.60.

One 9-year-old drinking the USDA-recommended three cups a day would polish off about 5-1/2 gallons a month. A household with two kids, 11 gallons. Milk alone would cost that family \$39.60 per month.

The average SNAP benefit for families with children in New Hampshire is \$289 a month. For everything.

So when struggling families come to the St. Vincent De Paul food pantry in Laconia on Mondays and Wednesdays and are able to reach into the new double door, stainless steel refrigerator for a bottle of fresh milk, that is a genuinely big deal.

"It's very expensive for families to buy, and they go through a lot of milk," said McKee Jack, who has managed the Laconia pantry as a volunteer for 11 years. "A lot of times they skip things like that which are important with their limited funds."

A grant from the Foundation's Community Crisis Action Fund to the New Hampshire Food Bank

allowed for the purchase of 35 cold storage units — refrigerators and freezers — for food pantries and soup kitchens across the state.

That means that more fresh foods — particularly meat and dairy products — are getting to families who need them. Some of the new units were upgrades. But some small food pantries now have refrigeration for the first time.

The Laconia pantry has never distributed milk before. And that milk is not only fresh — it's local. The Food Bank's "New Hampshire Feeding New Hampshire" program makes it possible for Jack to buy the milk directly from the Contoocook Creamery. The farmer delivers it every week.

Got milk? Indeed.

Pictured: McKee Jack (right) helps Bram Robertson of Contoocook Creamery fill up the Laconia food pantry's new refrigerator with fresh milk.



We are transforming the world

This is the story about a child in the Democratic Republic of Congo who wanted to be an engineer. She dreamed of building things — useful things that would improve people’s lives. But engineering, Marina Ngalula was told, was for boys. When she grew, and enrolled at the University of Kinshasa, she studied business and computer science.

Then, like so many people displaced by violent conflict, Marina fled DRC and came to America. She spoke no English, but enrolled in a class for English-language learners — and she learned fast.

Marina got a job at a nonprofit, caring for children with disabilities. And she enrolled in college — this time in an advanced manufacturing program at Manchester Community College, all of the credits from which would transfer toward an engineering degree at the University of New Hampshire.

Because she was an asylum-seeker, she did not qualify for any federal aid. Her previous university credits did not transfer.

Marina is 29 now, and she is a Mechanical Engineering major at UNH in Manchester. She carries a full course load and works 12-hour night shifts every Friday through Sunday as a team leader at a manufacturing company that produces laboratory equipment.

Foundation scholarships are helping her fulfill her childhood dream of becoming an engineer. In 2020, the Foundation awarded \$6.4 million in scholarships to almost 1,700 students, helping many keep their studies on track despite the pandemic.

In May of next year, Marina will take her degree in hand and set out to build those useful things she dreamed of building as a girl.

“I always feel like engineers transform the world,” Marina said. “I want to be part of that.”

Pictured: Marina Ngalula at the University of New Hampshire in Manchester.



We are strengthening local journalism

Walter Cronkite said “journalism is what we need to make democracy work.”

But American journalism finds itself in a perilous place: Newspapers have shed half their newsroom jobs in just over a decade, leaving local news outlets able to cover a fraction of the issues they once could. New models to keep local journalism alive are springing up. In New Hampshire, one model involves dropping age-old competition in favor of collaboration.

The Granite State News Collaborative is a group of about 20 media and educational outlets that share content that can be localized to their regions.

When COVID hit and the economic shutdown reverberated through newsrooms, reporters and editors took pay cuts or were furloughed, and print editions were suspended. “But you still have to produce the news during a pandemic,” said Collaborative Executive Director Melanie Plenda. “That’s when people need us.”

A grant helped the Collaborative to hire laid-off journalists as freelancers — and to raise additional funds.

Stories with important public health news and information related to COVID were shared daily.

Recognizing a “news desert” for Spanish-speakers in New Hampshire, the Collaborative worked with New Hampshire Public Radio to help launch “¿Qué Hay de Nuevo, New Hampshire?” (“What’s New, New Hampshire?”), a Spanish-language broadcast initially focused on distributing critical public health news. The Collaborative has undertaken a multiyear project on race and equity, examining systems and policies in New Hampshire that have disproportionate impacts on communities of color.

Cronkite again: “I worry that we’re not getting enough of the news that we need to make informed judgments as citizens.” The News Collaborative is helping people in New Hampshire get more of the news they need to do just that.

Pictured: Melanie Plenda, executive director of the Granite State News Collaborative, getting ready to tape “The State We’re In,” a new digital series by New Hampshire PBS produced in partnership with the Collaborative.

“The work ahead for our communities, and for New Hampshire’s community foundation, is enormous.”

FROM THE CHAIR AND PRESIDENT

Our communities have been and continue to be tested.

Through a year of tumult and unprecedented challenges, the people of New Hampshire’s nonprofit sector did not falter in their missions to feed struggling families, to shelter people without homes, to speak out for racial justice, to advance voting rights, to mentor children, to bring communities together with the truth-telling power and joy of the arts. Students stuck with their studies despite great odds and obstacles, and young activists called upon our communities to live into founding American ideals.

It’s who we are, what our communities are made of, at their best — even during their worst.

And people came together and gave — from \$25 to \$6 million — to support that work, to see our communities through, and to help them recover.

The Foundation opened the Community Crisis Action Fund in March of 2020, and every dollar of that fund is going into our communities. We increased Foundation grantmaking and maximized flexibility for grantees, awarding \$48 million in grants and \$6.4 million in scholarships in 2020. We worked with the state to administer the Nonprofit Emergency Relief Fund, helping to move \$40 million in federal CARES Act money to nonprofits in communities across New Hampshire.

The pandemic and economic upheaval also called into sharp relief — and further exacerbated — inequities that were already deep. Latinx, Black and other people of color have been disproportionately affected by COVID in New Hampshire. Nationwide, people from communities of color are three times more likely to be infected with the virus than whites, and twice as likely to die. While our state is wealthy overall, economic inequity is severe. That inequity was already keenly felt by children and families in struggling communities and underfunded school districts, where student outcomes are strongly correlated with poverty — and made worse in many cases as families struggled with job loss and remote schooling. Our state enjoys growing racial and ethnic diversity — especially among younger generations. And New Hampshire is also marred by ugly and threatening incidents of racism.

That is also who we are.

We can and must do better — as a country, as a state and as institutions, including this one.

The work ahead for our communities, and for New Hampshire’s community foundation, is enormous.

The Foundation staff and board are engaged in deep learning and long-term planning and are committed to doing our part to advance equity, racial justice and economic inclusion across all areas of our work. The urgency is clear: The future of our state, our shared prosperity and well-being depend on every person having access to the opportunities, resources and supports needed to thrive.

New Hampshire can be a place where that happens — and when it is, it will be a better place for everyone. Achieving that will take time, deep collaboration and the unflagging tenacity to keep at it, even when things get hard. We’re in.



Barbara Couch
Incoming Chair,
Board of Directors



Kenneth Kinder
Outgoing Chair,
Board of Directors



Richard Ober
President & CEO

2020 HIGHLIGHTS

NEW HAMPSHIRE TOMORROW

The Foundation's New Hampshire Tomorrow initiative to increase opportunities for the most vulnerable children and families reached its five-year mark in 2020. The pandemic deepened many inequities. The Foundation adapted grantmaking to respond to community need, including: partnering with the state on an emergency child care collaborative (page 4); supporting mentoring programs as they adapted to continue to help children and families; providing funding for technology for substance-use disorder treatment and recovery centers to serve people via telehealth; supporting organizations advocating for school-funding fairness; supporting family resource centers; and helping community college students stay on track to complete their degrees.



NH GIVES BREAKS ALL RECORDS

NH Gives, the 24-hour giving event created by the New Hampshire Center for Nonprofits, shattered all previous records in 2020 — raising more for New Hampshire nonprofits than it had in the previous four years combined. An unprecedented **14,000 people gave \$3.4 million in just 24 hours — including \$1 million in the first eight minutes of the event.** The Foundation partnered with the Center for Nonprofits on NH Gives, and Foundation donors offered \$260,000 in matching grants.

EMERGENCY RELIEF TO NONPROFITS

The Foundation, New Hampshire Center for Nonprofits and Community Development Finance Authority worked together to create a grant program and **help the state administer the Nonprofit Emergency Relief Fund, facilitating the distribution of \$40 million in federal CARES Act funding** by the Governor's Office for Emergency Relief and Recovery. Grants enabled nonprofit organizations with a variety of missions to continue to serve tens of thousands of New Hampshire residents.



ADAPTING OUR GRANTMAKING

In response to the pandemic and increased community need, the Foundation adapted its grantmaking strategy and mobilized new resources into our communities in 2020, making immediate and unrestricted grants to reduce pain and hardship for the most vulnerable. We dedicated our Express Grant program to COVID response, made available early release of installments of multiyear unrestricted operating funds and made additional strategic grants where they were most needed. In all, **the Foundation made \$48 million in grants in 2020 while providing maximum flexibility to existing grantees.**

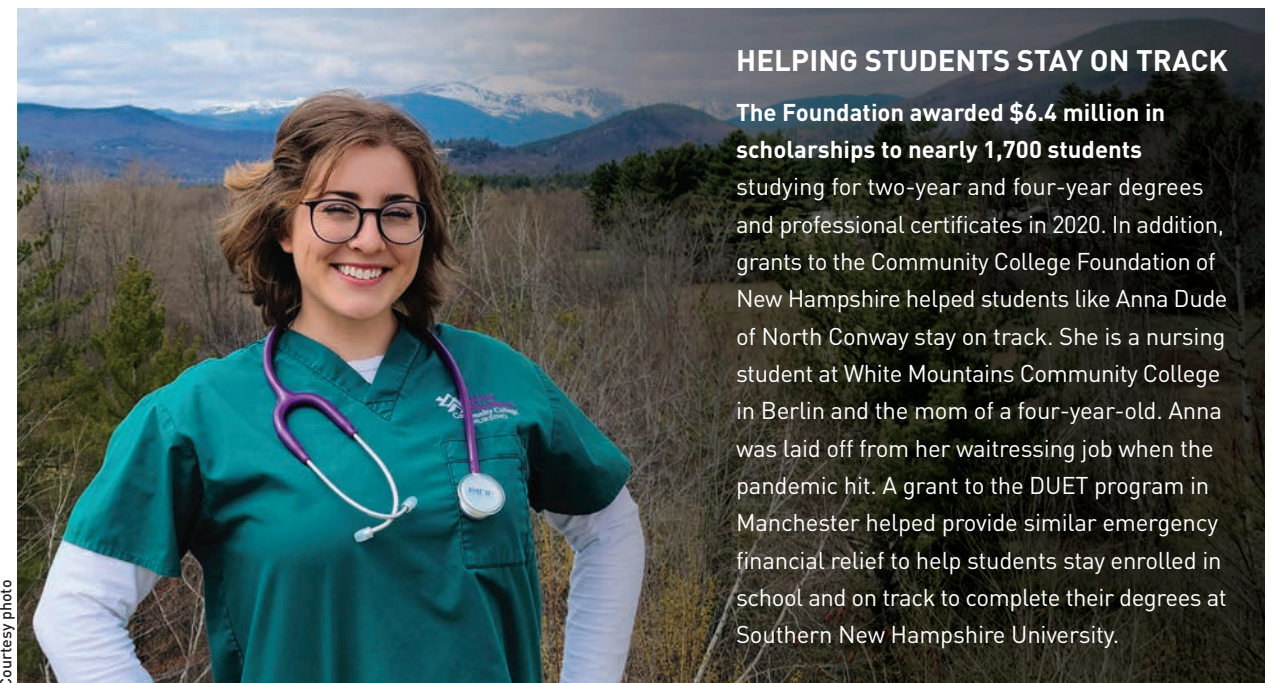
NEW FUND FOR CRISIS RESPONSE

The Foundation opened the Community Crisis Action Fund in March of 2020 to respond to critical needs in our communities — **and generous people gave \$10,517,237 into that fund (in amounts starting at just \$25).** Every penny is going out into the community. Grants have helped to house people without shelter, feed struggling families, deploy COVID-response community health workers in Manchester and Nashua (page 8), provide telehealth access to people in recovery, protect victims of violence — and so much more. Near the end of 2020, philanthropist, writer and advocate MacKenzie Scott made a \$6 million donation into that fund. In all, 79 new philanthropic funds were established at the Foundation in 2020.



HELPING STUDENTS STAY ON TRACK

The Foundation awarded **\$6.4 million in scholarships to nearly 1,700 students** studying for two-year and four-year degrees and professional certificates in 2020. In addition, grants to the Community College Foundation of New Hampshire helped students like Anna Dude of North Conway stay on track. She is a nursing student at White Mountains Community College in Berlin and the mom of a four-year-old. Anna was laid off from her waitressing job when the pandemic hit. A grant to the DUET program in Manchester helped provide similar emergency financial relief to help students stay enrolled in school and on track to complete their degrees at Southern New Hampshire University.



BY THE NUMBERS

NEW HAMPSHIRE CHARITABLE FOUNDATION 2020

\$69,441,512

Total gifts

\$54,546,502

Total grants, program initiatives, scholarships and loan awards

\$946,933,381

Total assets

5,687

Grants to 2,085 nonprofit organizations

\$48,101,740

Total grants and program initiatives

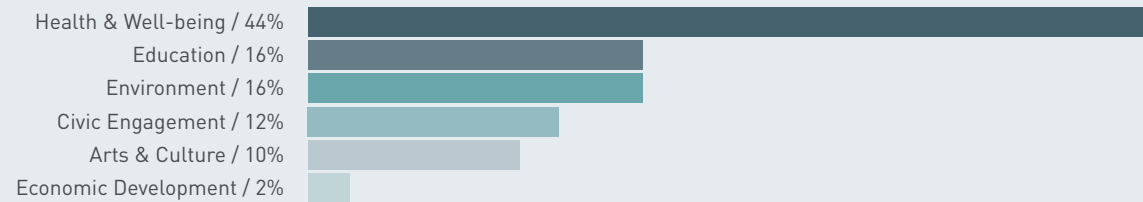
1,844

Scholarships to 1,692 students

\$6,444,762

Total scholarships

GRANTS BY INTEREST AREA



FINANCIAL STATEMENTS

ASSETS	2020	2019
Cash and cash equivalents	\$48,904,392	\$47,499,493
Investments	\$878,994,138	\$755,576,665
Other assets	\$19,034,851	\$14,393,959
Total Assets	\$946,933,381	\$817,470,117
LIABILITIES AND NET ASSETS		
Grants payable, accounts payable and other liabilities	\$16,458,562	\$17,765,550
Funds held as agency funds	\$49,241,585	\$44,481,050
Total Liabilities	\$65,700,147	\$62,246,600
Without Donor Restriction	\$733,419,100	\$622,115,055
With Donor Restriction	\$147,814,134	\$133,108,462
Total Net Assets	\$881,233,234	\$755,223,517
Total Liabilities and Net Assets	\$946,933,381	\$817,470,117

The final audited statements will be posted on our website when they become available. Please visit www.nhcf.org.

INVESTMENT REPORT

For more than a half century, generous New Hampshire individuals, families and businesses have entrusted their philanthropic assets to the New Hampshire Charitable Foundation. The Foundation has a track record of strong investment performance across changing economic times. We seek the best possible return over the long term while avoiding undue risk — maximizing dollars available to fund critical work in New Hampshire communities today, while prudently stewarding and growing those resources to maintain an enduring source of philanthropic capital.

LONG-TERM POOL

The majority of funds at the Foundation are invested in a highly diversified global portfolio called the long-term pool. This diversification decreases risk and contributes to our solid performance record. Our investment committee works with Cambridge Associates to manage this fund.

15.0%

Investment return generated

AS OF DECEMBER 31, 2020	TRAILING 1 YEAR	TRAILING 3 YEAR	TRAILING 5 YEAR
NH Charitable Foundation long-term pool	15.0%	7.9%	9.0%
Cambridge Associates endowment median*	14.1%	8.4%	9.4%
Global stocks 70% (MSCI ACWI)/ bonds 30% (BC Aggregate)	14.3%	9.0%	10.1%

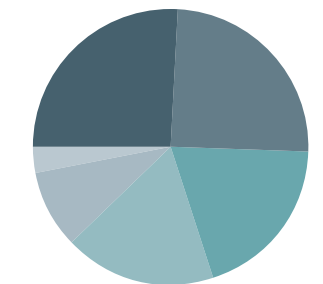
*The Cambridge Associates endowment median comprises almost 400 client academic institutions and foundations.

INVESTMENT COMMITTEE

Michelle Chicoine
Laurie Gabriel, Chair
Kathleen McQuiggan
Joseph Morone

Erika Pagel
John F. Weeks, III
Rick Williams

ASSET ALLOCATION [12/31/20]



- U.S. Equity / 26.0%
- Global Ex-U.S. Equity / 24.6%
- Hedge Funds / 19.4%
- Private Equity & Venture Capital / 18.0%
- Fixed Income / 9.1%
- Cash & Equivalents / 2.9%

IMPACT INVESTING POOL

Our impact investing pool offers donors the opportunity to pool charitable resources to make capital available to innovative business ventures and nonprofit organizations. Impact investments strengthen communities while generating a financial return.

5.0%

Investment return generated

AS OF DECEMBER 31, 2020

SUSTAINABLE POOL

The sustainable pool is for people who prefer their investments screened for environmental, social and governance criteria while producing solid returns now and in the future.

13.6%

Investment return generated

AS OF DECEMBER 31, 2020

For more detailed investment information, please visit www.nhcf.org.

DONORS IN 2020

Donors to the Foundation ensure that New Hampshire has a flexible and reliable source of philanthropic resources — today and for the future. More than 1,200 individuals, families and organizations from all over the state gave nearly \$70 million in 2020. We are deeply grateful to each and every one of them for their commitment and generosity.

Anonymous (71)	Frank Bequaert	Megan Burke-Kidder	Thomas Coffman	Anne Rich Dewees	Paul & Andrea Felix	Eric Gottesman	Harvey & Christina Hill
Friends of Abenaki, Inc.	Bill & Jeanine Berger	David & Doris Burns	& Debra Ragen-Coffman	Charitable Foundation	Jef & Katherine Fellows	James & Darlene Graczyk	Doug Hill & Alexandra Breed
Absolute Title	Peter Bergh & Janet Prince	Ken Burns & Julie Brown	Rick & Jan Cohen	Bob Dewey & Pam VanArsdale	David & Susan Feltus	Marlene Graf	David Hills & Catherine McLaughlin-Hills
Robert & Lauren Adams	Richard & Linda Beyer	Business & Industry Association of New Hampshire	Gary & Janice Colby	Joseph & Lisa DiBrigida	Phillip & Lisa Ferneau	Donald Graham	Conrad N. Hilton Foundation
Employees of AGNE & Vista Foods	Bigelow & Company	Weld Butler	Alexander Colhoun & Selina Rossiter	Jeanne Dietsch & William Kennedy	Estate of William E. Ferry	Muriel Graham	Estate of Catherine Hirsch
John Ahlgren	Jane Bindley	The Jack and Dorothy Byrne Foundation	Columbia Tough Mother Funder of Oregon Community Foundation	Digital Federal Credit Union	Fidelity Charitable Trustees' Philanthropy Fund	Joyce Grandmason	Robert Hirschfeld & Polly Ingraham
Arthur H. & Gertrude L. Ainslie Memorial Trust	Bio X Cell, Inc.	C&S Wholesale Grocers, Inc.	Stephanie Comer	Jay & Toni Dinkel	Allyn Field & Lianne Moccia	Diane Gray	Gary & Meg Hirschberg
Shota & Kemlo Aki	Kirk & Julie Bishop	Colin & Paula Cabot	The Concord Group Insurance Companies	Michael & Shawanna Dion	Rebecca Field	Robert & Sallie Graziano	Lucy Hodder & Robert Thomson
Alexander Host Foundation	John & Pamela Blackford	Elizabeth Cabot	Congregational Church of North Barnstead	Anna-Marie DiPasquale & Bruce Ocko	Financial Strategy Retirement Partners	Great River Hydro	John & Jean Hoffman
Heywood Alexander	David Blair & Lina Hervas	Meade Cadot & Sandy Taylor	Greg & Margo Connors	James Dirubbo	Deborah Finch	Louis Greco & Mary McCartney	Sally Hollaman
Susan Almy	Mark Blanchard	Timothy & Margaret Caldwell	Bea & Woolsey Conover	Nicholas Dobroski	George & Sylvia Findell	William & Kathy Green	Pieter Hollenberg
Benge & Sarah Ambrogio	Mark & Kathy Blanchard	Stephen Camann	Conproco	Jeffrey Dodge	Margaret Fischang	The Greenspan Foundation	Robert & Stephanie Hood
Mark & Christine Anderson	Horace Blood	Cambridge Trust Company of New Hampshire	Jim & Peggy Cook	& Lauralyn Saunders	Barbara Fischer	William & Patricia Greubel	Frank & Belva Hopkins
Patricia Andrews	Jeannine & Robert Bryant-Blood	Patricia Campbell & David Lacoste	Coös County Family Health Services	Christopher & Theresa Dolloff	Gail Fisher	Grey Rocks Foundation	Andrew Hostetler
Victoria Antoshenkov	Robert Spiegelman & Truda Bloom	Lisa Capicchioni	Peter Copelas	The Donley Foundation	Timothy Fisher	Parker Griffin & Camille Bharucha	Jim & Kathryn Hourdequin
The Aquilino Family	Michael & Stephanie Bolduc	The Patricia Ladd Carega Gallery	David & Judy Corbit	Donormarket, Inc.	James & Naomi Fitzgibbons	Clark & Happy Griffiths	Karen Howat
Thompson Arrison	James & Margaret Bonney	Estate of Sandra Carroll	Olga Cote	Mary Dowse	Andrew & Ana Flaster	Jessica Griffiths	Peter & Janice Howe
Arts Alliance of Northern NH	Peter Bornstein & Linda Upham-Bornstein	Sandra Carroll	The Couch Family Foundation	Leslie Drexelius	Ralph Fletcher & JoAnn Portalupi	& Timothy Wennrich	Timothy & Carol Hoyt
David & Katherine Ashton	Marianne Borowski	Kevin & Tracy Casey	Dick & Barbara Couch	Patrick Duffy & Jaye Gibson	Kerry & Theresa Ford	RC Grimsley	Yina Huang
Denise Askin & Walter Noyalis	Bryan Bouchard	Paul & Patricia Casey	Countrybrook Farms	Richard & Patricia Dugger	Stephen & Rosamund Forrest	Franklin & Katherine Grossman	John Hubbard
Aubuchon Foundation	Philip & Suzanne Boulter	Robert & Patricia Caulfield	Mary Cove & Rebecca Sykes	John & Melinda Dumais	Family Foundation	Daniel & Kasia Grossman	Dawn Huebner & Lisa Bunker
Marshall & Linda Audin	Ronald Bourgeault & James Horan	Patience & Tom Chamberlin	Joseph & Charlotte Cox	James Dunaway & Libby Barlow	Adam Pignatelli & Jessica Forrest	Groups Recover Together	Lindsey Humes
Autodesk Foundation	Paul & Susan Boyce	Christine Chambers	Joseph & Charlotte Cox	Dunkin' Brands, Inc.	Stephens & Linda Fowler	Janet & Timothy Guen	Philip & Diane Hunter
Avery Insurance & Maine Mutual	Boys & Girls Club of Souhegan Valley, Inc.	Paul & Anne Chant	Jeffrey & Martha Crocker	Travis Dunn & Camille Pattison	Stephen & Jane Frasca	Gupta Family Foundation	Neil & Terry Hussey
Warren & Susan Ayres	Stephen Bragdon & Cheryl Belair	Friends of Jeremy Graczyk	Elizabeth Crowell	Gerald & Bernadette Dupont	Jameson & Priscilla French	Ritu Gupta Ullal & Saurabh Ullal	Jack & Kim Hutton
George Badolato	Barry Braksick	Brooks & Nancy Chase	Philip & Jane Currier	Sylvio & Cecile Dupuis	Fresh Tracks Racing	Susan Gutchess & Helen Ingalls	Impax Asset Management
& Mical Allopenna	Estate of Leon & Jeannette Brassard	Cheshire County Conservation District	Stephen Curtin & Mary Wilke	Renee Duval	Philip & Bridget Freudenberger	Thomas W. Haas Foundation	Interlaken Foundation
Mark Baer	Barry & Caryl Brensinger	Skyler Chick	Anthony Damato	Eastern Bank and Trust Company	Milton & Carolyn Frye	Thomas Haas	Jane's Trust
Bald Peak Community Fund, Inc.	William & Sally Brierre	Eric & Jennifer Chinburg	Matthew & Kelli D'Amore	Eastern Bank Foundation	Mary Fuller	Estate of Ann G. Haggart	Harold & Betsy Janeway
Roy & Sandra Ballentine	Vincent Broderick	Stephen Chisholm	Christopher Daniell	The Richard Eaton Foundation, Inc.	Laurie A. Gabriel	Steven & Trim Hahn	Friends of the Jefferson Public Library
Bangor Savings Bank	Howard & Joan Brodsky	Estate of Robert Christy	The Arthur & Dolores Daniels Foundation	Jonathan & Sarah Eck	Mary Gale Foundation	Charles Hall Trust	Judith Jellinek
Thomas & Nancy Barrett	Peter Bross	Monica Ciolfi	Robert & Mary Davies	Robert & Sarah Edwards	Estate of Thomas S. Gale	Richard & Jane Hall	Christian Hallowell & Cynthia Morrison
The Barrette Family	Anne Brown	Citizens Bank	Heather Deangelis	Peter Egelston & Joanne Francis	Val Galton	Christian Hallowell & Cynthia Morrison	John & Gail Hanson
Thomas & Patricia Barstow	Blythe Brown	Geoffrey E. Clark & Martha Fuller Clark	Thomas & Dorcas Deans	Dustin Ehle	Ed Tomey & Maich Gardner	John & Gail Hanson	Harbor Advisory Corporation
Ryan & Trish Barton	Christopher Brown	Andrew Clark & Jennifer Holleran	Hali Dearborn & James Caldwell	Jay & Carol Ehlen	Wesley Gardner	John & Gail Hanson	Jack & Sara Harkins
Barbara Bartram	Daniel Brown	John & Kelly Clark	Dereck Deblois	The Eighth Pole	John & Laura Gargas	John & Gail Hanson	Beryl Harper
James & Ellen Bassett	Mary Johanna Brown	Edmund & Marian Claxton	Estate of Albert O. Decato	Chris & Janet Eliades	Gates Industrial Corporation Foundation	John & Gail Hanson	Leslie Harrington
William Batesole & Anne Nordstrom	David & Jerilyn Brownell	Estate of Bernice M. Clay	Michael & Lauren DeCristofaro	Pauline Elkin	Gateways Community Services	John & Gail Hanson	Betsey Harris
Lisa Baumgartner	Hunter & Kirsten Brownlie	Karen Clement	Rosamond & Francois Delori	Polly Ellerbe	Ellen Gaudreau	John & Gail Hanson	Kate & Phil Harrison
James & Martha Beattie	Fred & Linda Brownson	Hilary Cleveland	Louis & Linda DeMaio	Warren & Julia Emley	Michelle Gavin	John & Gail Hanson	Harvard Pilgrim
Estate of Nancy R. Beck	Alexander & Cheryl Buchanan	David Click & Kathleen Bollard	Jeffrey & Blair Demers	Stephen Ensign	Stephen & Carol Gehlbach	John & Gail Hanson	Health Care Foundation
Ted & Kennie Bedford	Claire Budro	CMH Wealth Management, LLC	Daniel Dennehy	Peter & Mary Eppig	Frank M. & Olive F. Gilman Foundation	John & Gail Hanson	Nicholas & Constance Harvey
James & Susan Bee	Peter & Ellen Burger	James Coburn	William & Rae Dennehy	Philip & Margot Estabrook	Doris Gionet	John & Gail Hanson	Pamela Harvey
David & Patsy Beffa-Negrini	Donald & Cynthia Burgess	David & Ellie Cochran	Albert Desmarais	Kenneth & Jennifer Evans	Sidney & Susan Girardin	John & Gail Hanson	James Hassinger
Benevity Community Impact Fund	Steven & Kathleen Burke		Jean Deupree	Jon & Lucia Evans	Bill & Hansi Glahn	John & Gail Hanson	Doug & Judy Hatfield
Carolyn Benthien	Matthew Burke			Douglas & Martha Evelyn	Robert & Beverly Glendening	John & Gail Hanson	Michael & Beth Stonebraker
The Doris L. Benz Trust				Richard M. Fairbanks Foundation, Inc.	Brian Goetz & Margaret Newland Goetz	John & Gail Hanson	Jeanette Heidmann
				Jack Fallon Memorial Scholarship Fund	Robert & Deborah Goldstein	John & Gail Hanson	Celeste Hemingson
				Jay & Donna Fallon	Margaret Goodlander	John & Gail Hanson	Paul & Sussan Henkel
				Michael & Sharon Fanger	David & Jessica Goodman	John & Gail Hanson	Eric & Rebecca Herr
				Geza & Aniko Fejes-Toth	Raymond & Helen Goodman	John & Gail Hanson	Paul & Robbie Hertneky
				Lewis Feldstein	Linda Gray & David Gotjen	John & Gail Hanson	Neal & Leigh Hesler
						John & Gail Hanson	Robert Hickey & Patricia Burke Hickey

Michael & Patricia Kidder	Charles Lovett & Susan Retz	Estate of Albert & Katharine Merck	Corinne Null	Robert & Bethany Prunier	Caryl Sawtelle	Peter & Ann Strachan	Samuel Vokey
John & Constance Kielely	The Lubbe Family	Margaret Merritt & Ronald Lawler	NVGM Exploratory	Peggy Pschirrer	Rick & Jan Sayles	Lynne Sullivan	Michael Wagner & Laura Rice
Estate of Leslie G. Kimball, Jr.	Nancy Luebbert	Peter & Carolyn Mertz	Dick & Liz Ober	Johanna Publow	Estate of Stella Sheckter	Lawrence & Pia Sunderland	Estate of Carl Wallman
Ken & Amy Kinder	Lumina Foundation	Scott & Lisa Metzger	George & Kristin O'Brien	Charles Purse	John & Jill Schiffman	David & Chris Sundman	Craig Walsh
Andrew Klein & Diane Schussel	Carol Ann Lund	Metzger/McGuire	Jane & Daniel Och	The Putnam Foundation	Estate of Diane Schott	Robert & Susan Thoresen	Connie Davis Watson Foundation
Elizabeth Klein	Jonathan & Elizabeth Lurie	Robert & Jane Meyer	John & Sarah O'Connor	Robert & Rosemary Putnam	Robert & Gladys Schussel	Robert Sutton	Bernard & Mary Waugh
Hailey Klein	The Lyman Family	Jeffrey Meyers & Amy Ignatius	Robert Odell & Judy Butler	Chris & Alison Pyott	Sarah Schwaegler	Barbara Sweet	John & Gail Weeks
Deborah Knight	Lynch Family Charitable Foundation	Merylyn Mezitt	Tod & Vicki O'Dowd	Queen City Rotary Foundation	Jonathan Schwartz	Kurt & Elaine Swenson	Jack & Pat Weeks
David & Sandra Kochman	John & Janice Lynch	Jack Middleton	Dean & Kathy Ogelby	Alfred Quimby Fund for Town of Sandwich	Mackenzie Scott	Isabel Swift & Steven Phillips	Stanley & Yvonne Weglarz
Gerda Kochman	Russell & Tina Lyon	Estate of Joseph Miller	Anthony & Judith Olson	Alice Racine Trust	Mark Scura & Maureen Redmond-Scura	John Swope	David Weir
Andrew & Betsy Komjathy	Rosemary Mack & James Guy	Kenneth & Linda Miller	John Oparowski	Vincent Raciti	Mary Searles	Martha Talbot	Donald & Sharon Welch
Alan & Amy Kono	Edward & Phyllis MacKay	Patrick Miller & Pamela Andruszkiewicz	Open Society Foundation	Thomas & Christine Rath	Robert H. & Gertrudge Sedgley Charitable Trust	Target Corporation	Jim & Jane Welch
Adam Kossayda	Jonathan Mackey & Beth Newhouse	Peter & Ashley Milliken	Orchard Foundation	Laura & James Rauscher	The Sedoric Family	Adam Taylor	Estate of John B. Welch
David Kotz & Pamela Jenkins	Robert Maclean	Thomas Mirabello & Mary Ann Svec	Mark Otis & Ellen Ratner-Otis	Beth Raymond	Robert & Elizabeth Segal	Brad & Ann Taylor	Bob & Binney Wells
Austin & Betty Ann Kovacs	Alexander & Sunny Macmillan	Isaac Mishkit & Michelle Long	Henry & Pauline Parker	Peter Rayno & Wendy Fracassi-Rayno	Sempercor Foundation	Dorothy Taylor	Eric & Karen Werner
Mary Lou Krambeer	Charlton & Diana MacVeagh	Brian & Mary Mokler	Todd Parker	Samuel Reid	Nancy Sevchenko	Posie Taylor	Western Connecticut Council Navy League of U.S.
Michael & Ellen Kroll	Sean & Kirsten Mahoney	The Monadnock Conservancy	Cynthia Patterson	Roger & MaryBeth Reville	Beverly Shadley & Carina Self Jay & Michelle Shattuck	Steve Taylor	Tom & Beverly Westheimer
Jason Kroll & Rachel Forbes	Mainstay Technologies	Paul & Sandra Montrone	William & Elizabeth Peabody	Richard Gaudreau	Bill & Toby Shea	Tender Corporation	Gretchen Wetzel & Cindy Halliday
Katelyn Kwoka & Rebecca Perkins Kwoka	Norman & Judith Makechnie	Robert & Susan Mooney	Gregory & Sandra Pelletier	Richards Free Library	Benjamin Siracusa Hillman & Betty Luther-Hillman	Estate of Skip & Peggy Tenney	Robert Wetzel & Brenda Mainer
Estate of Linden E. Labbe	Christine Mann	Daniel & Karen Moran	People's United Bank	Harvey & Pam Richardson	Catherine Skove	Paul & Lori Tetreault	Benjamin & Ann Wheeler
Ladies Union Aid Society of Valley Regional Hospital	Charles Maliszewski & Heidi Mosbarger	Thomas & Sheryl Morin	John & Alice Pepper	Matthew & Elizabeth Richmond	Ann Smith	Bee Thayer	David & Anne Whiting
Crystal Laflamme	Roy & Eeva Malool	Mike & Jayne Morin	Nick & Ruth Perencevich	Melinda Richmond	Bruce & Amy Smith	Christopher & Wendy Thayer	Frank Whittemore & Lynne Monroe
Duke & Malinda Laflamme	Joel & Mary Jo Marker	Estate of Elting Morison	Jennifer & Dana Perkins	Ronald & Jane Rioux	Cotten Smith	The Trillium Foundation	Sue & Bob Thoresen
Beverly LaFoley	Laura Marron & Stephen Eckberg	Joseph Morone & Lindsay Evans	Alison & Michael Perrella	Marta Rivera	David & Anica Smith	William & Jennifer Thomas	Jeffrey Throm
Michael Lafond & Gretchen Booth	Karin Martel	Robert Moses & Gena Cohen Moses	Robin Perry	Riverview Farm	Gabriel & Agnes Smith Trust	Sue & Bob Thoresen	Christopher & Ann Williams
Andre & Deborah Lafreniere	Peter Martin & Lynn Freeman	Robert & Shelly Moses	Dorothy Peterson	Martha Robb	Tim & Katie Smith	Jeffrey Throm	Jean Thurston
Lake Street Advisors	Martin's Point Healthcare	Mt. Eustis Chapter, Order of the Eastern Star	Kevin Peterson & Rebecca Lovejoy	Dana & Martha Robes	Marjorie Smith	James & Brenda Tibbetts	James & Brenda Tibbetts
Lakes Region Scholarship Foundation	Carl & Nancy Martland	Taylor & Courtenay Mugford	Lisa Petralia & Mark Casey	Wayne & Kim Robinson	Mike & Jean Smith	William Tickle & Amber Lessard	William Tickle & Amber Lessard
Carol Lambert	William E. & Ann W. Marvin	James & Jennifer Mullins	Pew Owners Association of the Stark Union Church	John Roeser & James Copeland	SNHU Arena	Tillotson Corporation	Tillotson Corporation
Josephine Lamprey	Mary Hitchcock Memorial Hospital	Estate of Preston & Carolyn Mulrooney	Donald & Nancy Phaneuf	John Rogers	Robert & Lorraine Tilney	Robert & Lorraine Tilney	Robert & Lorraine Tilney
Drew & Carol Landry	James & Kathy Masiello	Roger & Linda Murray	Megan Phaneuf	Randolph & Deborah Roody	Patricia Tivnan	Patricia Tivnan	Patricia Tivnan
Robert & Marcellene Landry	Roger & Helen Matthews	David & Kate Murray	Mary Philippy	Alan & Patricia Rosenberg	Town Fair Tire Foundation	Town Fair Tire Foundation	Town Fair Tire Foundation
Sara & Peter Lang	Kathleen & Alan Matthews	Al Nadeau Electric	Lee & Margaret Phillips	Kim Rosenfield	Jack & Alexandra Tracy	Jack & Alexandra Tracy	Jack & Alexandra Tracy
Sen. Sylvia & Robert Larsen	Terry & Sandra Mayo	Rotary Club of Nashua	Matt & Michelle Pierson	Peter & Susan Rotch	True North Networks	True North Networks	True North Networks
Harold & Gerry LaValley	John & Joan McArdle	Charity Fund	Michael & Debora Pignatelli	Rodney Rowland	Stacie & Mary Trueheart	Stacie & Mary Trueheart	Stacie & Mary Trueheart
Richard & Lorraine Lavalliere	Dorothy McCagg	Lynne Naughton	Amos & Tami Pike	Mark & Maria Rubinstein	Jim & Lynda Truncellito	Jim & Lynda Truncellito	Jim & Lynda Truncellito
Carola Lea	T. J. McCartney	Nellie Mae Education Foundation, Inc.	Penny Pitou	Anthony Ruddy	Gregory & Corinna Tucker	Gregory & Corinna Tucker	Gregory & Corinna Tucker
Carl & Sandra Lehner	Karen McCloskey	William Nelson & Paula Schnurr	Plymouth Rock Assurance Corporation	David & Mary Ruedig	Norm & Pat Turcotte	Norm & Pat Turcotte	Norm & Pat Turcotte
Michael & Monica Lehner	Estate of Paul J. McGoldrick	Matthew Neuman	Plymouth Rock Foundation	Estate of Sumner & Maureen Rupprecht	Karin Turmelle	Karin Turmelle	Karin Turmelle
Robert & Judi Lemaire	Estate of Elizabeth Yates McGreal	New England Wire Technologies	Poetry Society of New Hampshire	W. Bourne Ruthrauff	Tyler, Simms & St. Sauveur, CPAs	Tyler, Simms & St. Sauveur, CPAs	Tyler, Simms & St. Sauveur, CPAs
Kirk & Judith Leoni	Marie McKay	New Hampshire Women's Foundation	Patricia Polk	Morgan & Tara Rutman	Richard Tyler & Frances Belcher	Richard Tyler & Frances Belcher	Richard Tyler & Frances Belcher
David & Grisel Levene	Douglas & Celia McLane	Bonnie Newman	Gisela Polleys	Dennis & Maureen Ryan	John & Susan Valpey	John & Susan Valpey	John & Susan Valpey
Richard & Sheryl Levy	Ben & Amy McLaughlin	James Nichols	Positive Tracks	Estate of Everett J. Ryan, Jr.	Theodore & Katy Valpey	Theodore & Katy Valpey	Theodore & Katy Valpey
Curtis & Patricia Ley	Peter & Jane Kitchel McLaughlin	Alexas Nikiforakis	Robert Potter & Roberta Arbree	Steven & Lucy Ryder	Robert & Alice Valpey	Robert & Alice Valpey	Robert & Alice Valpey
Andrew & Donna Lietz	George & Leigh McLean	Pawn Nitichan	Peter Powell	Taylor & Catherine Sage	Ronald & Jodi Valpey	Ronald & Jodi Valpey	Ronald & Jodi Valpey
George & Dominique Lightbody	Charles & Patricia McLure	Sherrill Nixon	Jean Power	St. James Episcopal Church of Laconia	Jan van de Winkel	Jan van de Winkel	Jan van de Winkel
Lewis & Anita Link	Mark & Diana McNabb	Randolph & Barbara Noelle	Benjamin Pratt	St. Paul's Episcopal Church of Concord	Jane VanBremen	Jane VanBremen	Jane VanBremen
Curtis Lintvedt	Kathleen McQuiggan	Daniel & Lori Norris	Timothy & Kerrin Pratt	Elise Salek & Brian Tauscher	Bennet Vandebunt & Laura Fox	Bennet Vandebunt & Laura Fox	Bennet Vandebunt & Laura Fox
Mark London	John & Dianne Mercier	Norwich Partners of Florida, LLC	Stephen & Sandra Pratt	Michael & Judith Salter	Vanderheiden Family Foundation	Vanderheiden Family Foundation	Vanderheiden Family Foundation
The Long Family Charitable Foundation			Trustees of the Protestant Episcopal Church in New Hampshire	Richard & Michelle Samdperil	Peter & Lee Vandermark	Peter & Lee Vandermark	Peter & Lee Vandermark
Westy Lovejoy			Thomas Proulx	Marilyn Sanderson & John Hettinger	Jim & Cindy Varnum	Jim & Cindy Varnum	Jim & Cindy Varnum
Anne Lovett & Stephen Woodsum				Santander Bank	Timothy & Kathleen Vaughan	Timothy & Kathleen Vaughan	Timothy & Kathleen Vaughan
					Shawn Verbout & Joan O'Brien	Shawn Verbout & Joan O'Brien	Shawn Verbout & Joan O'Brien
					VGHM, LLC	VGHM, LLC	VGHM, LLC
					Paul & Nancy Vincent	Paul & Nancy Vincent	Paul & Nancy Vincent
					Lawrence Vincent	Lawrence Vincent	Lawrence Vincent

We are grateful for all gifts made to the Foundation, but due to space constraints we only list gifts of \$250 or more.

These lists have been prepared with care. If your name has been listed incorrectly or omitted in error, please email Monique Scharlotte at mps@nhcf.org so that we may update our records.

DONORS TO THE COMMUNITY CRISIS ACTION FUND

The Foundation opened the Community Crisis Action Fund on March 20, 2020 to help respond to the needs in our communities — and generous people gave an unprecedented \$10,517,237 million into that fund (in amounts ranging from \$25 to \$6 million) to help our communities in this time of crisis. Every penny is going out into the community.

Anonymous (41)
 Shota & Kemlo Aki
 Heywood Alexander
 Patricia Andrews
 Daniel Ardito
 Aubuchon Foundation
 Sally Auer
 Autodesk Foundation
 Avery Insurance & Maine Mutual
 Phillip & Thelma Ballew
 Bangor Savings Bank
 Nicole Barrett
 The Barrette Family
 Frederick E. and Anne R. Barstow Fund of Fidelity Charitable
 Frank Bequaert
 Thomas & Lisa Biklen
 Kirk & Julie Bishop
 William Bolin
 Anne Bonaparte-Krogh
 Marianne Borowski
 Barry Braksick
 Jeffrey & Beverly Brewer
 Vincent Broderick
 The Brown Foundation
 Peter & Ellen Burger
 Kenneth & Julie Burns
 Martha Burton
 Buzz Memorial Fund of Fidelity Charitable
 The Jack and Dorothy Byrne Foundation
 Cambridge Trust Company of New Hampshire
 Robert & Patricia Caulfield
 Monica Ciolfi
 Citizens Bank
 John & Kelly Clark
 David Click & Kathleen Bollard
 Christopher Closs & Pamela McDonald
 Laurence & Katharine Cloud
 CMH Wealth Management
 James Coburn
 Ellen Cohn

Sarah Coito
 Columbia Tough Mother Funder of the Oregon Community Foundation
 The Concord Group Insurance Companies
 Jim & Peggy Cook
 The Corbett Family
 Stephen Curtin & Mary Wilke
 Robert & Mary Davies
 Heather Deangelis
 Dereck Deblois
 Michael & Lauren DeCristofaro
 Jean Deupree
 Bob Dewey & Pam VanArsdale
 Anna-Marie DiPasquale & Bruce Ocko
 The Donley Foundation
 Aaron Donovoan
 Duncan Donovan
 Frederic Donovan
 & Ayn Whytemare-Donovan
 Mary Downes
 James Dunaway & Libby Barlow
 Eastern Bank and Trust Company
 Eastern Bank Foundation
 Robert & Sarah Edwards
 Patrick & Penelope Eggleston
 Dustin Ehle
 The Eighth Pole
 Stephen & Tanisha Ekerberg
 Suzanne Ellis
 Dorothy Fay
 Joseph & Katherine Fellows
 Deborah Finch
 Andrew & Ana Flaster
 Ralph Fletcher & JoAnn Portalupi
 Kerry & Theresa Ford
 Stephen and Rosamund Forrest Family Foundation
 MJ Fowler
 Stephen & Denise Fox
 James Freiburger
 & Eleanor Dunfey-Freiburger
 Fresh Tracks Racing

Michael & Betty Friedman
 Nathan Fullerton
 Karen Furtado
 The Gaffney Family
 Gates Industrial Corporation Foundation
 Ellen Gaudreau
 Jessica Geiben Lynn
 Bill & Hansi Glahn
 Brian Goetz & Margaret Newland Goetz
 Margaret Goodlander
 Gary Gorski
 Eric Gottesman
 Linda Gray & David Gotjen
 Great River Hydro
 Grey Rocks Foundation
 Parker Griffin & Camille Bharucha
 Jessica Griffiths
 & Timothy Wennrich
 RC Grimsley
 Grove Street Fiduciary
 Timothy & Janet Guen
 James Guy & Rosemary Mack
 Steven & Trim Hahn
 Jennifer Hanson
 Benjamin Harris
 Harvard Pilgrim Health Care Foundation
 Nicholas & Constance Harvey
 Michael & Shannon Hays
 Michael & Donna Healy
 Celeste Hemingson
 Paul & Robbie Hertneky
 Robert Hickey
 & Patricia Burke Hickey
 Sheelagh Higginson
 Benjamin Siracusa-Hillman
 & Betty Luther-Hillman
 David Hills & Catherine McLaughlin-Hills
 Robert Hirschfeld & Polly Ingraham
 Lucy Hodder & Robert Thomson
 Robert & Stephanie Hood
 Timothy & Carol Hoyt
 Dawn Huebner & Lisa Bunker

Jane's Trust
 Yvonne Jenkins
 Lucretia Jevne
 Cleveland Kapala
 & Lucia Kittredge
 Nicholas Keating
 Katherine Kelly
 & Jacqueline Demaio
 Ken & Amy Kinder
 Deborah Knight
 Mary Lou Krambeer
 Richard Kruppa
 Peggy Kuehne
 Lake Street Advisors
 Betty Lane
 Sara & Peter Lang
 Christopher Larsen
 Sen. Sylvia & Robert Larsen
 Diana Lawrence
 Carola Lea
 Peter Leberman
 Edward & Susan LeClair
 Robert & Judi Lemaire
 Kirk & Judith Leoni
 Curtis & Patricia Ley
 The Long Family Charitable Foundation
 Justin & Elizabeth Lorschbach
 John & Janice Lynch
 Robert & Kathleen MacLeod
 Charlton & Diana MacVeagh
 Claire Mallette
 Manners Family Charitable Fund of Fidelity Charitable
 Laura Marron & Stephen Eckberg
 Peter Martin & Lynn Freeman
 Martin's Point Healthcare
 Susan Mast
 Kathleen & Alan Matthews
 Teresa McAloon
 Dorothy McCagg
 Mary McCartney & Louis Greco
 T. J. McCartney
 Karen McCloskey
 Lorna McEwen
 McLane Middleton
 Suzanne McMullen
 Kenneth & Linda Miller
 Laura Milliken
 Isaac Mishkit & Michelle Long
 June Mittelmark
 Brian & Mary Mokler
 Gerry & Sharon Monroe
 The Montrone Family
 Makiyah Moody
 Allen Morgan
 Joseph Morone & Lindsay Evans

James & Jennifer Mullins
 Donald Munson
 Robert Murphy & Jean Potter-Murphy
 Tami Nason
 Nellie Mae Education Foundation, Inc.
 Network For Good
 Sherrill Nixon
 Northeast Delta Dental
 Corinne Null
 Susan Nykamp
 Dick & Liz Ober
 Daniel & Jane Och
 John & Sarah O'Connor
 Tod & Vicki O'Dowd
 Lorraine Otis
 Kristen Oliveri & Chris Plummer
 Orchard Foundation
 Mark Otis & Ellen Ratner-Otis
 Kevin Padin
 The Patricia Ladd Carega Gallery
 PayPal Giving Fund
 Alison & Michael Perrella
 Christina Pickering
 Matt & Michelle Pierson
 Adam Pignatelli
 & Jessica Deforrest
 Michael & Debora Pignatelli
 Plymouth Rock Assurance Corporation
 Plymouth Rock Foundation
 Positive Tracks
 Benjamin Pratt
 Matt & Tasha Przybyla
 Johanna Publow
 The Putnam Foundation
 Robert & Rosemary Putnam
 Chris & Alison Pyott
 John & Mary Rauh
 Laura & James Rauscher
 Samuel Reid
 Marta Rivera
 Martha Robb
 Cynthia Rodenhauer Stewart
 & Thomas Stewart
 Randolph & Deborah Roody
 Kim Rosenfield
 David & Mary Ruedig
 Morgan & Tara Rutman
 Dennis & Maureen Ryan
 St. James Episcopal Church of Laconia
 Barbara Salvatore
 Santander Bank
 Peter Satterfield & Marie Straiton
 Monique & David Scharlotte

Charles Schuessler
 & Jane Flythe
 Jonathan Schwartz
 MacKenzie Scott
 Mark Scura & Maureen Redmond-Scura
 Mary Searles
 Beverly Shadley & Carina Self
 Shaheen & Gordon, PA
 Bill & Toby Shea
 Lois Shea
 Bruce & Amy Smith
 Cotten Smith
 David & Janet Spalding
 Karen Jones-Squires
 & James A. Squires
 Roland & Sharon St. Onge
 Jonathan Stewart
 Deborah Stone
 Target Corporation
 Posie Taylor
 Jerry & Elizabeth Tepe
 Paul & Lori Tetreault
 Bee Thayer
 William & Jennifer Thomas
 Sue & Bob Thoresen
 Three Sisters Foundation
 Jeffrey Throm
 Town Fair Tire Foundation
 Jack & Alexandra Tracy
 The Trillium Foundation
 Trustees of the Protestant Episcopal Church in New Hampshire
 Karin Turmelle
 Richard Tyler & Frances Belcher
 Timothy & Kathleen Vaughan
 Shawn Verbout & Joan O'Brien
 The Vineyard Way Charitable Fund
 Lyn Vinskus
 Samuel Vokey
 Michael Wagner & Laura Rice
 Bernard & Mary Waugh
 Jack & Pat Weeks
 Donald & Sharon Welch
 Lydia Wells
 Eric & Karen Werner
 Tom & Beverly Westheimer
 Audrey White & Daniel Keaveny
 Richard & Charlene Williams
 Judith Wood
 Elsa Worth
 Deborah Wyman
 Johanna Young & Lindley Rankine
 YourCause, LLC
 Sharyn Zunz

GIFTS FROM DONOR-ADVISED FUNDS

Anonymous (7)
 Almy Family Fund
 Aragain Fund
 Charles and Lora Arter Fund
 Ash Tree Fund
 Barrett Family Fund
 Bedford Fund
 Beffa-Negrini Jubilee Fund
 Dr. Horace, Gene, Robert and Jeannine Blood Family Fund
 Phil and Suzie Boulter Charitable Fund
 Blythe Brown Charitable Foundation
 Dan Brown Charitable Foundation
 Mary Johanna and Haley Brown Fund
 Burleigh Farm Fund
 CAPP Family Fund
 Jen and Eric Chinburg Fund
 Cochran Family Fund
 Bea and Woolsey Conover Fund
 Corbit Family Fund
 Cornerstone Fund
 Raymond G. and Olga Cote Family Fund
 Couch Family Fund
 Stanton and Elisabeth Davis Fund
 Dolloff Family Fund
 Eagle's Rest Fund
 Entrepreneurs' Fund of New Hampshire
 Evans Morone Family Fund
 Family 140 Fund
 Feldstein Family Fund
 David and Susan Feltus Fund
 Flatirons Fund
 Fowler Family Fund
 Francis Fund
 Frasca Family Fund
 Freeman-Martin Family Fund
 Wesley Gardner Charitable Fund
 Gehlbach Family Fund
 Glahn Family Fund
 Golden Wood Fund
 Bob and Deb Goldstein Family Charitable Fund
 Goodman Family Fund
 Lawrence and Muriel Graham Charitable Fund
 Grandgeorge Family Fund
 William S. Green Memorial Fund
 Griffiths Wennrich Family Fund
 Jocelyn F. Gutchess Fund
 Leland and Maureen Hall Family Fund
 Jean and William Hallager Fund

Hallowell Morrison Fund
 Harkins Family Charitable Fund
 Paul and Ann Harvey Legacy Fund
 HBA Fund
 Head Light Fund
 Hermit Hill Farm Family Fund
 Hirshberg Family Fund
 Doris and Vivian Horton Fund
 Howe Family Fund
 Impax Asset Management Charitable Fund
 Nicole Jutras Fund
 Kitchel-McLaughlin Family Fund
 Lake View Fund
 Maureen Marie Lein Memorial Fund
 Lina Fund
 Curtis Lintvedt Contribution Fund
 Lower Gates Fund
 Mainstay Technologies Fund
 George W. Merck Fund
 Jayne and Mike Morin Family Fund
 Morison/Smith Family Fund
 Robert and Gena Cohen Moses Fund
 David and Kathleen Rushford Murray Charitable Fund
 Nine Less Pines Fund
 Nutrire Fund
 Opportunity Fund
 Pat's Place Fund
 Patterson Family Fund
 Petralia/Casey Family Fund
 Phillips Family Fund
 Penny Pitou and Milo Pike Charitable Fund
 Pomegranate Fund
 Prince/Bergh Family Fund
 Bob and Rosemary Ragen Fund
 Richardson Family Donor-Advised Fund
 Melinda Richmond Fund
 Rosebud Fund
 Barbara and Benjamin Rowland Fund for Historic and Wildlife Preservation
 Rutman Family Fund
 Caryl J. Sawtelle Fund
 Joseph G. and Jean E. Sawtelle Fund
 Bruce M. and Sarah T. Schwaegler Fund
 Semolina Fund
 Silent "E" Fund
 Skylark Fund
 Stepp Family Fund

Ken and Ilene Stern Charitable Fund
 Douglas and Angela Stone Family Fund
 Sunderland Fund
 Sundman Family Fund
 J.F. Swope Fund
 Tacooma Fund
 Tarleton Fund
 Tree Top Fund
 Turcotte Family Fund
 VanBremen Family Fund
 Peter and Lee D. Vandermark Fund
 John and Gail Weeks Family Charitable Fund
 Welch Family Fund
 Binney and Robert Wells Family Fund
 Westmeadow Fund
 Winebaum Fund
 Wood Family Fund
 Wyman Family Fund

These lists have been prepared with care. If your name has been listed incorrectly or omitted in error, please email Monique Scharlotte at mps@nhcf.org so that we may update our records.

PROFESSIONAL ADVISORS

These financial and legal advisors referred clients to the Foundation in 2020 to help them achieve their philanthropic goals.

Susan Abert, Esq. Norton & Abert, PC	Jessica Fuller Edward Jones	Colleen D. O'Connell, Esq. Barradale, O'Connell, Newkirk & Dwyer, PA
Christine S. Anderson, Esq. Ansell & Anderson, PA	Jaime I. Gillis, Esq. Integral Business Counsel PLLC	Alison S. Perrella, CPA Wipfli/Howe, Riley & Howe, PLLC
Tina L. Annis, Esq. Annis & Zellers, PLLC	Michelle Goldsmith Cummings, Lamont & McNamee, PA	Kathleen M. Robinson, Esq. Robinson, Boesch, Sennott & Daly
Joel Arsenaault, AAMS The Foundry Financial Group, Inc.	Sarah Grandfield Verrill Dana LLP	Jeanne Saffan, Esq. Upton & Hatfield, LLP
William H. Barry, III, Esq. Barry & Honorow, PLLC	Renee A. Harvey, Esq. Caldwell Law	Alexander Scott Buckley & Zopf
Stanley N. Bergman Withers Worldwide	Jody A. Hodgdon, Esq. Samaha Russell Hodgdon, PA	Thomas J. Sedoric Steward Partners Global Advisory
Michael J. Bolduc, Esq. Wyskiel, Boc, Tillinghast & Bolduc, PA	Thomas Hoyt Mascoma Savings Bank-Lebanon	Andrea L. Sennott, Esq. Robinson, Boesch, Sennott & Daly
Peter F. Burger, Esq. Orr & Reno, PA	Michael T. Jordan, Esq. Norton & Abert PC	Robert Skloff Silver Pine Capital
Timothy W. Caldwell, Esq. Caldwell Law	Susan F. Keller, Esq.	Kelley R. Small Standish Executive Search LLC
Albert J. Cirone, Jr., Esq. Law Office of Albert J. Cirone, Jr., PC	Kenneth R. Kinder The Kinder Financial Group	D. Casey Snyder, CFP Steward Partners Global Advisory
Breana Cole Bernstein Private Wealth Management	Megan C. Knox, Esq. McDonald & Kanyuk, PLLC	Jason Solomon Cambridge Trust
Jeffrey R. Crocker, Esq. Upton & Hatfield, LLP	Ann R. Lally Salem Co-Operative Bank	Richard J. Spead, PhD Richard J. Spead & Company
Mark S. Cross-Powers, CTFA NHTrust Financial Advisors-Concord Office	Brian P. Lortie, CPA, MST Cummings, Lamont & McNamee, PLLC	Nicole Tewksbury Malone, Dirubbo & Company, PC
John M. Cunningham, Esq. Law Offices of John M. Cunningham	Stephen Loughman Wells Fargo Advisors, LLC	Theofilos Vougias Devine Millimet
Ross V. Deachman, Esq. Deachman & Cowie, PA	Andrew Luce, CPA Mason & Rich, PA	Frank J. Vumbaco Edward Jones-Nashua Office
Richard J. DeMarco, Jr., CEPA UBS Financial Services, Inc.	Norman H. Makechnie, Esq. Upton & Hatfield, LLP	Robin Wells, CPA Carew & Wells PLLC
Denis P. Dillon, Esq. McLane Middleton	Karen R. McCloskey, CFP CMH Wealth Management, LLC	Robin Young, CFP, RLP Northstar Financial Planning, Inc.
Jonathan J. Edwards, CLU, ChFC Granite Financial Partners	John E. McCune, Jr., CFP Gulfstream Financial Group	
Melody Evans Teachers Insurance & Annuity Association of America	Caitlin McCurdy McLane Middleton	
Colleen Farley, CPM Robbins Farley	Jack K. Merrill, Jr., Esq. KSR Law Firm	
Mark D. Fernald, Esq. Fernald, Taft, Falby & Little, PA	Willemien Dingemans Miller, Esq. Downs Rachlin & Martin PLLC	
Fred J. Forman, Esq. Forman, Corcoran, Clark & Associates, PA	Mervin D. Newton, CPA	
	Justin Oates, CFP Northeast Investment Management, Inc.	

SPAULDING-POTTER CIRCLE LEGACY SOCIETY

The generous bequests of Marion Spaulding-Potter, her brother Huntley Spaulding and his wife, Harriet, were the genesis of the Foundation. These Spaulding-Potter Circle Legacy Society donors — including 34 new members in 2020 — have made plans for future estate gifts or other planned gifts.

Anonymous (78)	Claire Budro	Walter & Caroline Dueger	Wilfred Guitar & Linda Chapin-Guitar
Celina Adams & Cameron Wake	Jonathan & Anita Burroughs	Nicole Dufour & David Helie	Cheryl Guyre
Elizabeth Allen	David Butler	John Dumais	George & Ann Hackl
Sara Amato-Larabee & Joshua Larabee	Colin & Paula Cabot	Michael & Jensine Dyber	Maureen Hall
Benge & Sarah Ambrogi	George Carr	BJ Eckardt	Warren Hall, Jr.
Robert Potter & Roberta Arbree	Paul & Patricia Casey	Jonathan Edwards	Geraldine Hallgrimson
Elizabeth Arms	Thomas & Sally Cashel	Warren & Julia Emley	Scott & Kimberly Hamilton
Heather Ashton & Jacki Pepin	David & Becky Cawley	Jon & Lucia Evans	David & Jo Ann Hampson
Marshall & Linda Audin	Sarah Chaffee	Roger Everts	George & Doris Harrington
David & Robin Babin	Thomas & Patience Chamberlin	Maurice & Mariette Facques	Nicholas Harvey, Jr.
Cynthia Bainton	Stephen Chisholm	Eileen Fagan	Pamela Harvey
David Baker, Jr.	Albert & Nanci Cirone	Robert Fee & Lyn Seley	Joseph Healy, III
Roy & Sandra Ballentine	Geoffrey Clark & Martha Fuller Clark	Geza & Aniko Fejes-Toth	Edward & Erin Hennessey
Susan Ballentine	John & Kelly Clark	Lewis Feldstein	Susan Hermanson Shriver
Nancy Bassett	Lisa Clark	Julia Ferry	Eric & Rebecca Herr
Ted & Kennie Bedford	David & Ellie Cochran	Rebecca Field	David & Judith Hess
Peter & Cynthia Belowski	Gary & Janice Colby	C. Dennis Fink	Sally Hollaman
Carolyn Benthien	Bea & Woolsey Conover	Robert & Gretchen Fink	Thomas & Anne Hoopes
Shirley Bentley	David & Judy Corbit	Margaret Fischang	Diana Hopewell
Peter Bergh & Janet Prince	Lorraine Cosseboom	Elizabeth Fischer	Robert Hopkins
Elizabeth Bickel	Olga Cote	Cindy Flanagan	Timothy & Carol Hoyt
Charles & Barbara Bickford	David Craig	Janice Foust	John & Carol Hubbard
John & Pamela Blackford	Robert & Ruth Ann Cullinane	Stephens & Linda Fowler	George & Jean Hurley
Harley & Nancy Blake	Philip & Jane Currier	Stephen & Jane Frasca	Priscilla Hurlin
Ronald & Elizabeth Blankenstein	Matthew & Kelli D'Amore	Robert & Rebecca Freeman	Bruce & Betsy Hutchings
Elizabeth Blencowe	Marya Danihel	Jameson & Priscilla French	Peter & Virginia Irwin
Horace Blood	Susan Davis	Richard Frye	Betsy Janeway
Robert Blood	Robert & Dorie Dawkins	Nordel & Elizabeth Gagnon	Judith Jellinek
Robert Bossie	Thomas & Dorcas Deans	Val Galton	Karen Johansson
Philip & Suzanne Boulter	Dereck Deblois	Ann Gaseau	Eric & Donna Johnson
Claudette Boutin	Jean Deupree	Stephen Gaykan	Grace Johnson
Elaine Bovaird	Nancy Devine	Stephen & Carol Gehlbach	Margaret Johnson
Robert Bowman	James Dirubbo	Raymond & Helen Goodman	Peter Kachavos
Barry & Caryl Brensinger	JoEllen Thomas & Cassandra Donovan	Joan Goodyear	Marcia Kayser
Richard Brewster	Kevin L. Draper	Richard Heath & Cynthia Gove	Gary & Hope Keighley
Regina Bringolf	Leslie Drexelius	James & Darlene Graczyk	Mary Kelekci
Howard Brodsky	Timothy & Mary Ann Driscoll	Marlene M. Graf	Benjamin & Karina Kelley
Kenneth Brown	Beverly Grappone	Linda Gray	Ron Reynolds & Jane Kellogg
Mary Johanna Brown	Linda Gray	Janet Grevstad	Skip & Patsy Kendall
Pat & Jack Buben	John Dryfhout	Brian Grodman	Anne Kenney
	Richard Masse & Andrea Dudley		

David & Janice Kenyon	Robert McCabe, Jr.
Douglas & LeeAnn Kerr	T. J. McCartney
Thomas & Darlene Ketteridge	David & Maryann McCormack
John & Constance Kieley	Alexandra McElwaine
William & Sarah Kinlaw	Mary McGowan
Austin & Betty Ann Kovacs	Daniel & Georgia McGurl
Mary Lou Krambeer	Peter McLaughlin & Jane Kitchel McLaughlin
Dennis & Sandra Krause	Charles McLure
David Krempels	Robert Meagher & Linda Thomas
Michael & Tammy Krueger	Peter & Alida Millham
Tamar Kummel	Daniel & Karen Moran
Ann Kuster	Anne Morgan
John Kyriazis	Anu Mullikin
Beverly LaFoley	Natalie Murphy
Drew & Carol Landry	Gloria Neary
Shari Landry	William Nelson
Tim Murphy & Beth Landry-Murphy	Bonnie Newman
Lydia Lansing	Scott & Audrey Nixon
Robert & Sylvia Larsen	Sherrill Nixon
Elaine Lauterborn	Carin-Ingeborg Noack
Harold & Gerry LaValley	Kathleen Northrup
Richard & Lorraine Lavalliere	Marcia Ober
Lori & Jack Law	Patty O'Connor
Carola Lea	John & Maude Odgers
Sylvia Leggett & Betsy Kretschmer	Kent Olson
Judith LeMay	John Oparowski
David & Angela Lennox	Mark Otis & Ellen Ratner-Otis
Bernard & Judith Lepine	Rosalind Page & Thomas Simpson
David & Charlotte Lesser	Henry & Pauline Parker
Thomas & Nancy Lindsey	John & Alice Pepper
Harold & Kristen Losey	Dorothy Peterson
Charles Lovett & Susan Retz	Kevin Peterson
Carol Ann Lund	Robert & Rose Marie Phillips
Jacqueline Lyon	Sandra Phipps
Russell & Tina Lyon	Erle Pierce
Randa Mace	Matthew & Michelle Pierson
Rosemary Mack	Jeanne Polk
Charlton & Diana MacVeagh	Robin Pollard
Brad & Sharon Malt	Gisela Polleys
Scott & Beth Maltzie	Harold & Edith Posselt
Gordon Mann	Denise Poulos
Peggy Martin	Peter Powell
Peter Martin & Lynn Freeman	Benjamin Pratt
Amedeo & Isa Marvelli	Philip Preston
James Masiello	Raymond Stineford & Helen Prince
David & Jeanne Mason	Dan Prior & Judith Varsanyi
Mr. & Mrs. Donald F. Mason	Mark Prolman
Angela Matthews	Thomas Proulx
Kathleen & Alan Matthews	James & Judith Putnam

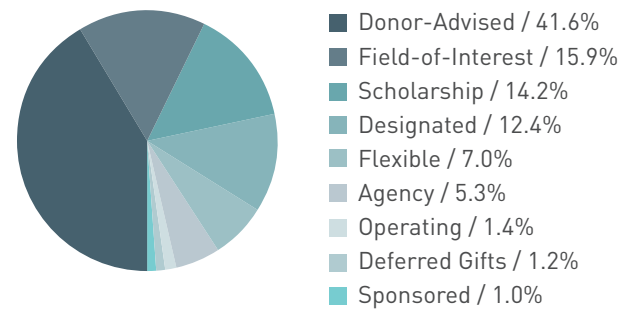
Robert & Rosemary Putnam	Willard & Sara Urban
Chris & Alison Pyott	Stephen & Ellen Vail
Ann Marie Rancourt	Jane VanBremen
John Randall, III	Sharon Vartanian
Laura & James Rauscher	Carolyn Vinica
Leonard F.B. Reed, Jr.	Janet Wade
Joseph Reilly	Steven Wagner & Theresa Tanous
Jane Rice	Steven & Alexandra Walker
Melinda Richmond	Carol Waseleski
Fred Roedel, II	Bernard & Mary Waugh
Richard Rollins	Stanley & Yvonne Weglarz
Randolph & Deborah Roody	David Weir
Rhonda Rosand	Anne Welch
Alan & Patricia Rosenberg	David & Anne Whiting
Jean Rosenthal	Stephen Winchester
Robert & Madeleine Rozumek	Richard and Frances Winneg
Fay Rubin	Joanne Wise
Richard Russell	Ellis Woodward
Richard & Heidi Sagar	Richard & Margaret Wright
Jeffrey Salloway	Brad & Susan Wyman
Michael & Judith Salter	Sherilyn Young
Barbara Salvatore	Val Zanchuk
David Sanderson	IN MEMORIAM
Douglas & Beverly Sarapin	Anonymous
Sareen Sarna	Marion Brink
Caryl J. Sawtelle	Sandra Carroll
John & Kerry Scala	Bernice Clay
Alison Scott	Albert Decato
Timothy Scott	Closey Dickey
John Seidner & Jennifer Wise	William E. Ferry, Jr.
Deirdre Sheerr-Gross	Persis Gow
Jayne & Laura Simoes	Harold Janeway
Joyce Skaperdas	Mary Jean Long
Katherine Snow	Manton B. Metcalf, III
Fred & Ellen Sprague	Joseph Miller
Robert Stephenson	Maureen Rupprecht
Frank Stevens	Stella Scheckter
Glenn & Jan Stone	Diane Schott
Eleanor Strang	Carl Wallman
Deborah Stuart	Erich Witzel
Arthur Sullivan	Anne Zachos
Schuyler Sweet	
Kurt Swenson	
Paul & Lori Tetreault	
H. Redmond & Marie Louise Thayer	
Mildred Thayer	
Richard & Avone Thielen	
Madeline Thompson	
Sue & Bob Thoresen	
Lorraine Tilney	

These lists have been prepared with care. If your name has been listed incorrectly or omitted in error, please email Monique Scharlotte at mps@nhcf.org so that we may update our records.

NEW FUNDS

The 79 new funds created at the Foundation in 2020 will touch thousands of lives across New Hampshire for years to come. We celebrate the generosity and vision of the people who created them.

ASSETS BY FUND TYPE



NUMBER OF FUNDS

79

New funds established in 2020

2,080

Total number of funds at the Foundation

Agency Funds are established by charitable organizations that want a source of long-term capital to support their missions.

Bobby Stephen's Fund for Education Agency Fund
Manchester Region

Nashua Rotary Community Grants Endowment Fund
Nashua Region

Designated Funds are established by individuals, families or businesses to support specific nonprofit organizations.

Bernice Clay Fund for the Huntington
Nashua Region

Education for All Children Fund
Lakes Region

George Gallup Clark Scholarship Fund
Lakes Region

Manchester Central Band Fund in Memory of Jack Fallon
Manchester Region

Marguerite's Place Fund
Nashua Region

Medallion Fund for Students of Manchester Community College
Manchester Region

Prince and Bergin Designated Fund
North Country Region

Stan and Annie Lund NH-UCC Outdoor Ministries Fund
Lakes Region

Tanzania Education Fund
North Country Region

Donor-Advised Funds are established by individuals, families or businesses who seek ongoing involvement in their giving.

Altus-East Charitable Fund
Piscataqua Region

Arthur and Dolores Daniels Foundation Fund
Monadnock Region

BJ Cirnigliaro Memorial Fund
Capital Region

Blanchard Family Foundation Fund
Capital Region

Bob and Rosemary Ragen Fund
Capital Region

Brooks and Nancy Chase Charitable Fund
Piscataqua Region

Campbell LaCoste Family Fund
Monadnock Region

Christine Mann Family Fund
Monadnock Region

Cove-Sykes Family Fund
Lakes Region

D'Amore Family Fund
Capital Region

Denise T. Askin and Walter J. Noyalis Charitable Fund
Manchester Region

Diane Schott Conservation Fund
Monadnock Region

Dion Family Charitable Fund
Manchester Region

Evans Morone Family Fund
Piscataqua Region

Fischer Family Fund
Upper Valley Region

Fowler Family Fund
Upper Valley Region

Gray Gotjen Hopeful Fund
North Country Region

How Did We Get Here Fund
Nashua Region

Jake and Cindy Winebaum Charitable Fund
Piscataqua Region

Joyce and Norman Grandmason Charitable Fund
Piscataqua Region

Karen Jones Squires and Jim Squires Donor-Advised Fund
Nashua Region

Larry, Nancy, Todd, and Tasha Vincent Family Fund
Upper Valley Region

Lawrence and Muriel Graham Charitable Fund
Lakes Region

Miller-Andruszkiewicz Family Fund
North Country Region

Mycorrhizal Fund
North Country Region

Perkins Kwoka Charitable Fund
Piscataqua Region

Roeseland Charitable Fund
Piscataqua Region

Ronald P. Bourgeault Charitable Fund
Piscataqua Region

Sam and Dominique Winebaum Charitable Fund
Piscataqua Region

Sowell Fund
Upper Valley Region

Watercress Fund
Monadnock Region

Wild Symphony Fund
Piscataqua Region

Field-of-Interest Funds are established by individuals, families or businesses who want to target their charitable gifts to address needs in a specific area of interest.

Bernice Clay Fund for Lifelong Learning
Nashua Region

Constance Jones Fund
Upper Valley Region

Dr. Joseph M. Miller Fund
Piscataqua Region

Ladies Union Aid Society Fund
Upper Valley Region

Leon and Jeannette Brassard Charitable Fund
Nashua Region

Manton B. and Teresa P. Metcalf Fund
Monadnock Region

Mount Washington Valley Community Assistance Fund
North Country Region

Nancy and Dave Williams Fund
Nashua Region

North Country Youth Arts and Culture Fund
North Country Region

Stan and Annie Lund Environmental Stewardship Fund
Lakes Region

Theresa and Linden Labbe Fund
Piscataqua Region

Flexible Funds for New Hampshire are established by individuals, families and businesses who entrust the Foundation to direct the funds when and where they will do the most good.

Community Crisis Action Fund
New Hampshire Charitable Foundation

Tenney Flexible Fund
Monadnock Region

Scholarship Funds are established by individuals, families or businesses to help students realize their educational goals.

Al and Anne Decato Scholarship Fund
Upper Valley Region

Bernice Clay Career Transition Scholarship Fund
Nashua Region

Bernice Clay Healthcare Scholarship Fund
Nashua Region

Betty Ann and Austin Kovacs Scholarship Fund
Upper Valley Region

Captain Ryan Scott Phaneuf Memorial Scholarship Fund
Nashua Region

Davis Family Scholarship Fund
North Country Region

Elias "Skip" Ashooh and Gail Fisher Ashooh Scholarship Fund
Manchester Region

Everett J. Ryan, Jr. Educational Fund
Manchester Region

Fischang Family Scholarship Fund
North Country Region

Jack Fallon Memorial Scholarship Fund
Manchester Region

Jill Coyle Memorial Scholarship Fund for Education
Nashua Region

Larry, Nancy, Todd, and Tasha Vincent Scholarship Fund
Upper Valley Region

Ruth S. Joyce Scholarship Fund for Boys
Lakes Region

Stan and Annie Lund Environmental Scholarship Fund
Lakes Region

Stella M. and Agnes B. Chickering Nursing Scholarship Fund
Piscataqua Region

Susan G. Spiner Scholarship Fund
Manchester Region

The fund listing does not match the total number of new funds established in 2020 as we do not list anonymous funds and deferred gifts.

COMMUNITY LEADERSHIP

More than 100 volunteers make up the Foundation's board of directors and regional advisory boards. These community leaders play a crucial role in advancing the Foundation's work.

BOARD OF DIRECTORS

Maureen Beauregard, *Manchester*
JerriAnne Boggis, *Milford*
Mary Johanna Brown, *Rye*
Barbara Couch, *Hanover*, Vice Chair
Rt. Rev. A. Robert Hirschfeld, *Hopkinton*
Lucy Hodder, *Hopkinton*, Secretary
Kenneth Kinder, *Pike*, Chair
Dianne Mercier, *Manchester*
Joseph Morone, *New Castle*
Pawn Nitichan, *Dover*
Richard Ober, *Dublin*
John Weeks, III, *Bedford*, Treasurer

CAPITAL REGION

Ahmad Aissa, *Concord*
Kelli D'Amore, *Concord*
Anna-Marie DiPasquale, *Concord*
Jonathan Eck, *Hopkinton*
Ellen Fries, *Bow*
Jessica Geiben Lynn, *Bow*, Vice Chair
Bill Glahn, *Concord*
Pieter Hollenberg, *Concord*
Angelica M. Ladd, *Henniker*
Angie Lane, *Concord*
Sylvia Larsen, *Concord*
Reed Loy, *Hopkinton*
Christine Rath, *Concord*
Elise Salek, *Concord*, Chair
Robert Segal, *Concord*

LAKES REGION

Joshua Arnold, *Ossipee*
Alexandra Breed, *Gilford*
Linda DeMaio, *Sandwich*
Margaret Donnelly, *Laconia*
Kenneth Evans, *Holderness*
Parker Griffin, *Hebron*, Vice Chair
Kathleen Kearns, *Hebron*
Duke Laflamme, *Gilford*, Chair
Melissa Lee, *Franklin*
Carmen Lorentz, *Belmont*
Linda Murray, *Wolfeboro*

MANCHESTER REGION

Sarah Ambrogi, *Manchester*, Chair
Christine Anderson, *Manchester*,
Vice Chair
Eva Castillo, *Manchester*
Diane Fitzpatrick, *Manchester*
Dallas Lagerquist, *Bedford*
Angela Martin, *Merrimack*
Daniel Norris, *Salem*
Alison Perrella, *Bedford*
Brandon Pierre, *Dunbarton*
Peter Rayno, *Salem*
Wayne Robinson, *Goffstown*
Timothy Soucy, *Manchester*
James Truncellito, *Manchester*
Robin Young, *Windham*

MONADNOCK REGION

Robert Edwards, *Antrim*
Stephen Gehlbach, *Jaffrey*
Gina Goff, *Sharon*
Adam Hamilton, *Peterborough*
Robbie Hertneky, *Hancock*
Adam Kossayda, *Harrisville*
Peter Leberman, *Hillsborough*, Vice Chair
Grisel Levene, *Dublin*
Christine Mann, *Peterborough*
Jason Nero, *Rindge*
Liana Poodiack, *Stoddard*
Peggy Pschirrer, *Walpole*
Steven Ryder, *Keene*
Audrey White, *Peterborough*, Chair

NASHUA REGION

Bobbie Bagley, *Nashua*
Steven Beals, *Hudson*
Alexander Buchanan, *Nashua*, Chair
Ritu Gupta Ullal, *Hollis*, Vice Chair
Cory Hussey, *Hollis*
Elizabeth Lorsbach, *Amherst*
Latha Mangipudi, *Nashua*
Mary McCartney, *Hollis*
Sandra Pelletier, *Nashua*
Jay Shattuck, *Hudson*
Janet Spalding, *Milford*

NORTH COUNTRY REGION

Suzanne Boulter, *Waterville Valley*, Chair
Mary DeVeau, *Glen*, Vice Chair
Pamela Laflamme, *Gorham*
Peter Laufenberg, *Thornton*
Anthony Ruddy, *Jackson*
Tim Smith, *Waterville Valley*
Christopher Thayer, *Sugar Hill*
Brenda Tibbetts, *Columbia*
Linda Upham-Bornstein, *Lancaster*
David Wood, *Bethlehem*
Jesse Wright, *Conway*
Susan Wyman, *Dummer*

PISCATAQUA REGION

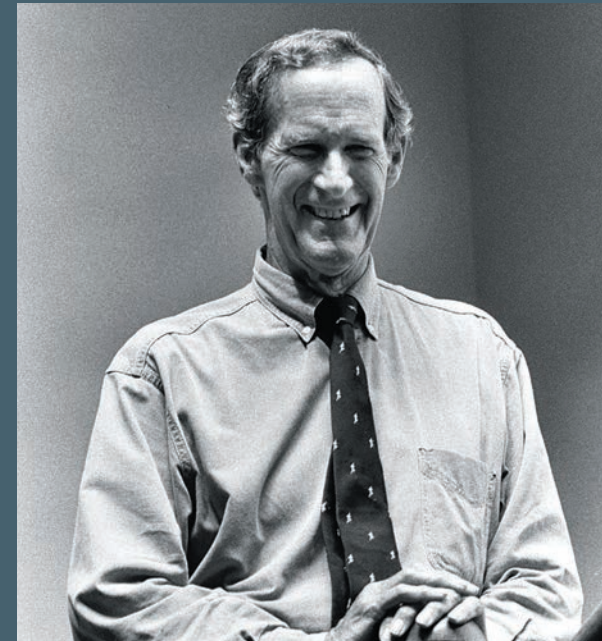
Benjamin Auger, *Eliot*, ME
Michael Bolduc, *Dover*
Jen Chinburg, *Exeter*, Vice Chair
Eric Gregg, *Portsmouth*
Robert Hickey, *New Castle*
Sandra Jalbert, *Rollinsford*
Jason Kroll, *Rye*
Kathleen MacLeod, *Rye*
Tod O'Dowd, *Portsmouth*, Chair
Mike Pilot, *Hampton*
Donna Ryan, *Kittery*, ME
Andrea Sennott, *Hampton Falls*
Ann Strachan, *Dover*

UPPER VALLEY REGION

Lauren Adams, *Norwich, VT*, Chair
Martha Beattie, *Hanover*
Timothy Caldwell, *Lyme*
Daniel Emanuele, *Hanover*
Andre Lafreniere, *Claremont*
Anne MacEwan, *Lebanon*
Posie Taylor, *White River Junction, VT*
William Thomas, III, *Hanover*
Pat Tivnan, *North Sutton*
Jane VanBremen, *New London*
Michael Wagner, *Hanover*, Vice Chair
Leah Wheelan, *Hanover*
Karen Zurheide, *New London*

This listing represents directors and regional advisors as of 12/31/2020.

DEDICATION



Harold Janeway

Chair, Board of Directors, 2003 – 2005
Chair, Investment Committee, 1995 – 2007

Few people have had a greater impact on the Foundation than Harold Janeway. His obituary noted that Harold was "widely admired for his evenhanded temper and skillfully deployed wit." He employed that same even temper and skillful wit to chair Webster's Town Meeting — and the Foundation's board and investment committee. Harold was a champion of conserving natural resources and protecting LGBTQ rights, a farmer and a rock climber, devoted husband to Betsy Janeway, father and grandfather, president of White Mountain Investment and two-term state senator. He helped steer improvements in the management of the Foundation's assets that strengthened its ability to serve New Hampshire in good times, and in times of crisis.

Anne Zachos

Chair, Board of Directors, 1994 – 1996

Anne Zachos led the Foundation's board with strength and confidence during a formative time. She was a longtime Manchester resident who was educated at Wellesley College, a feminist and a Democrat who worked at MIT and for the Red Cross and chose, as an important part of her life's work, the raising of three strong daughters. During her tenure as chair, the Foundation received the first \$9 million installment of what would become its largest gift, \$43 million to combat substance misuse in New Hampshire, and invested significant resources to create New Futures to advocate for policy change related to substance misuse prevention. Anne's husband, Kimon Zachos, also chaired the Foundation board from 1985-1988.





NEW HAMPSHIRE
CHARITABLE FOUNDATION

37 Pleasant Street, Concord, NH 03301-4005
800-464-6641 info@nhcf.org www.nhcf.org

The New Hampshire Charitable Foundation is
New Hampshire's statewide community foundation
founded in 1962 by and for the people of New Hampshire.



Confirmed in compliance with National
Standards for U.S. Community Foundations



Printed on 100 percent recycled paper made
in New Hampshire with soy-based inks

©2021 New Hampshire Charitable Foundation
Stories written by Lois Shea. Photography by Cheryl Senter.
Cover: Devon, Morgan and Rawson Phillips (front cover) embrace at Country Day School in Colebrook;
(back cover) students with teacher Emalie Covill.